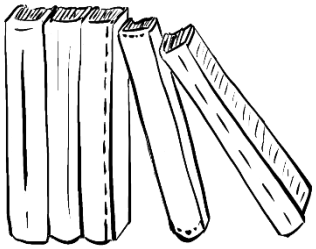


The Research Library of the J. E. Purkyně University

VĚDECKÁ KNIHOVNA
UNIVERZITY J.E. PURKYNĚ



Contents



Basic information
Contact information
Opening hours
Parts of the library
Library equipment
Library services
Lending services
Self-service equipment

Library collection
Library catalogue
E-books
Interlibrary loan service
Electronic information resources
Research services
Information literacy and consultation services
Library events



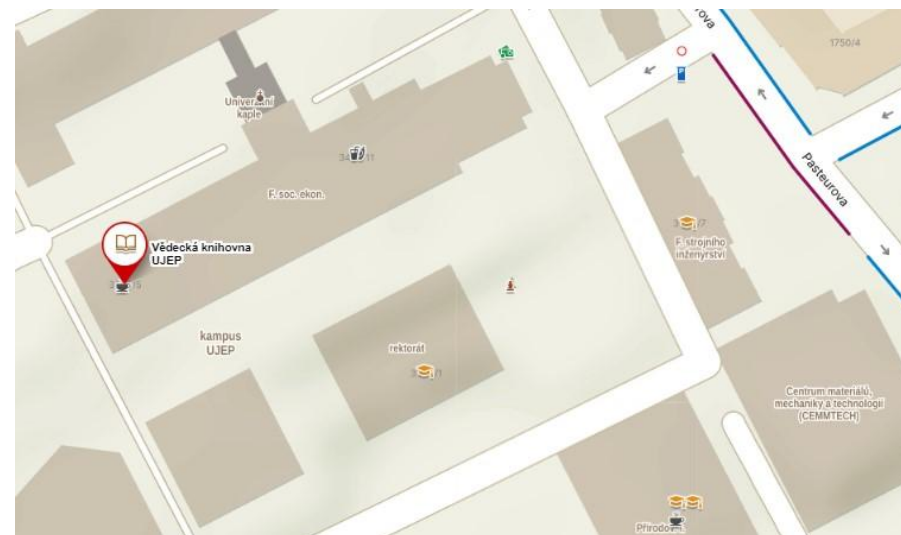
Basic information

The university library provides library and information services to students and staff of the university, as well as to the general public. The library collection specializes in documents and resources relevant to the academic fields taught at the University of J. E. Purkyně in Ústí nad Labem.

Web: <https://knihovna.ujep.cz/en/>



Contact information



The University Library of UJEP is located within the university campus area. The library building also houses the UJEP Bookstore and the Kampuska Café. The lending desk and access to the library collection are located on the third floor of the building.

Address: Pasteurova 5, 400 96 Ústí nad Labem

Contact:

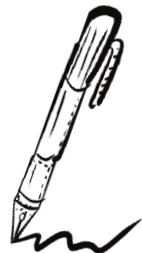
tel. (+420) 475 286 024-5

mob. (+420) 702 201 972

e-mail: pult@knihovna.ujep.cz

Opening hours

Mon–Thu	8:00–20:00
Fri	8:00–17:00
Sat	8:00–12:00

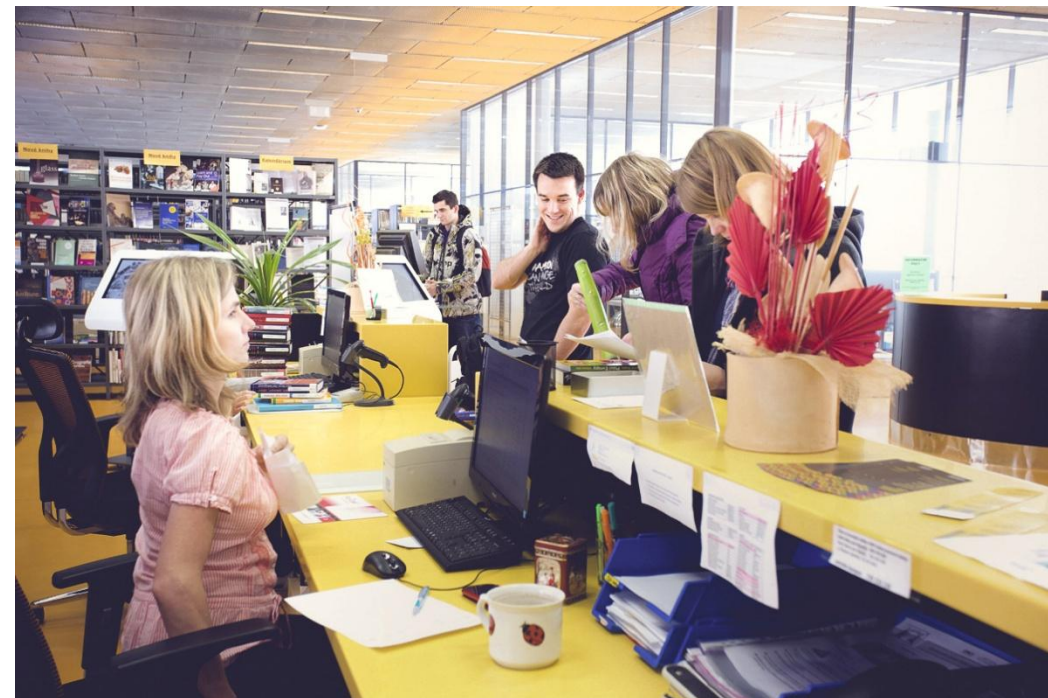


For more detailed information about the opening hours and any changes, please refer to the following:

<https://knihovna.ujep.cz/en/opening-hours-en>

e-mail: pult@knihovna.ujep.cz

tel.: (+420) 475 286 024/5



Parts of the library

The University Library of UJEP was established in 2013 through the merger of faculty libraries (awarded Library of the Year 2013). In addition to the extensive collection of academic literature available in open stacks and the library's storage areas, the library also includes specialized sub-libraries:

- Austrian Library (RK)
- European Documentation Centre (EDS)
- Methodological and Didactic Library (CEPRONIV)
- Globale° Library
- American Library
- Departmental Study Rooms (History, Political Science, German Studies, etc.)



Library equipment



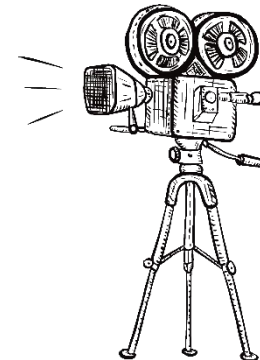
- A comfortable environment for both studying and relaxation
- Number of study spaces: 251 (including 48 with computers)
- Study areas: 4 study rooms (computer room, individual study room, two group study rooms)
- Relaxation zones: (outdoor terrace, bean bags)

- Wi-Fi internet access
- Library scanners, printers, thermal binding
- Acoustic chairs
- Electronic piano with headphones
- Coffee machine, snack vending machine
- Free drinking water dispenser
- Earplug dispenser (Špuntomat)

Library services

The University Library of UJEP provides library and information services to students of all faculties and study programs, academic staff, and employees of UJEP. Many services are also available remotely via the internet, including: creating requests for books stored in the library's reserves, renewing loans, checking your library account, submitting book purchase suggestions, and searching electronic information resources.

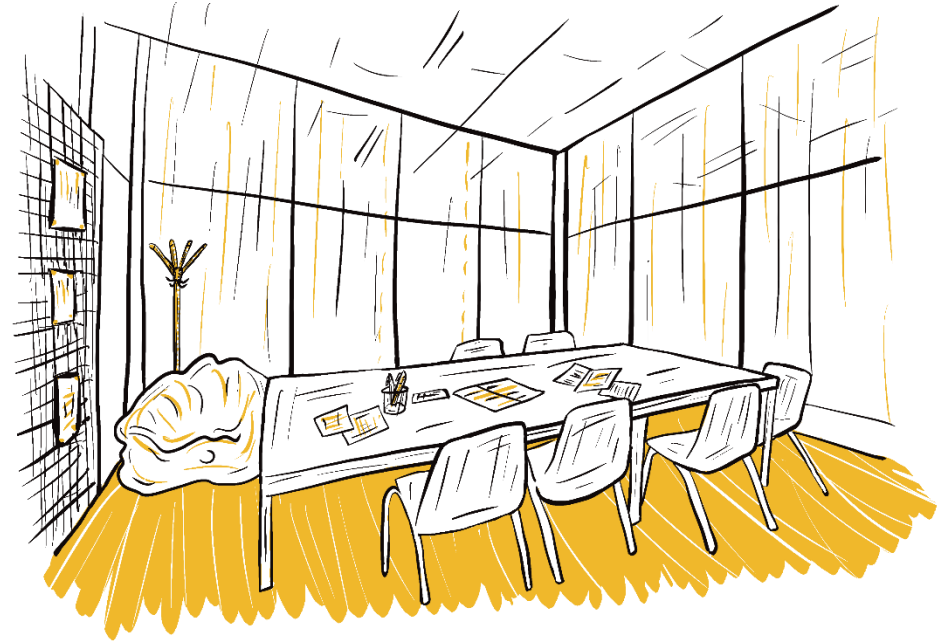
- Lending services
- Interlibrary loan services
- Information literacy and consultation
- Literature search services
- Cultural events



Lending services

- Registration of new users
- Borrowing documents from the open stacks (freely accessible library collection on the third floor) and from the storage areas
- Returning documents
- Assistance with searching the library catalog
- Addressing individual queries
- Reprographic services (copying, printing, book scanners)
- Computer study room, group study rooms, relaxation zones

<https://knihovna.ujep.cz/en/lending-services>



Registration of new users



The library provides library and information services to registered users (students of UJEP, employees of UJEP, and the public aged 15 and above).

- **UJEP students** need a valid UJEP student card (chip card or ISIC) for registration – registration is free of charge.
- **UJEP employees** need a valid UJEP employee card (chip card) for registration – registration is free of charge.
- **The public** must present an ID card and a photo for the issuance of a library card with a barcode (if they have an ISIC, ITIC, or ČD chip card, registration on those cards is possible) – registration fee for 1 year = 100 CZK.

<https://knihovna.ujep.cz/en/how-to-become-a-reader-of-the-library>

Library equipment



Self-service equipment

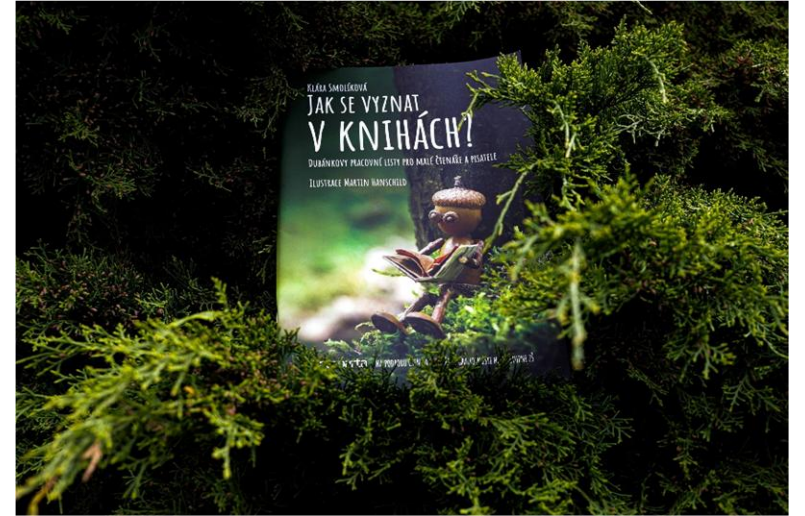
Loans and returns of documents can be made at the lending desk. Self-service devices are also available, allowing for the borrowing and returning of documents, as well as checking your library account.

- The SELF-CHECK machine located in the library operates during library opening hours.
- The RETURN AUTOMAT in the library's entrance hall allows for document returns 24 hours a day, 7 days a week (during library closure, access is available via a chip card scanner located at the building entrance).
- The BOOK DROP located outside between the library and the card center is used for returning documents requested from the library's reserves, with 24/7 continuous operation

<https://knihovna.ujep.cz/en/self-service-borrowing-and-return-of-documents>



Library collection



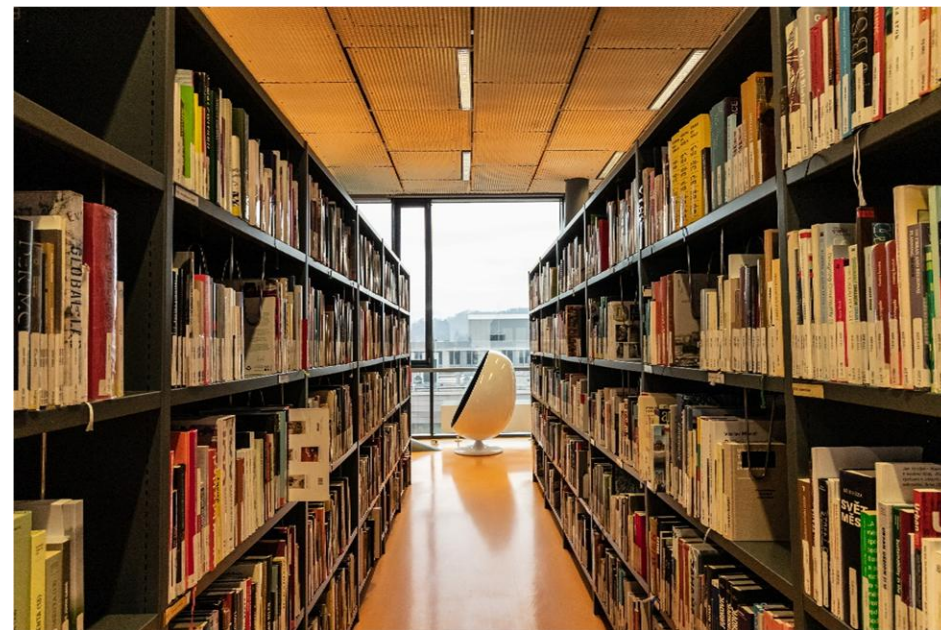
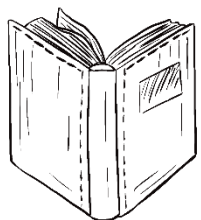
An extensive collection of academic literature and textbooks (approximately 375,000, with around 90,000 in the open stacks), daily newspapers, and Czech and foreign periodicals (approximately 380 titles).

The library collection is organized according to a modified version of the Conspectus method. Documents are arranged on shelves according to subject areas (see collection map)

<https://knihovna.ujep.cz/wp-content/uploads/2025/08/mapa-fondu-AJ.pdf>

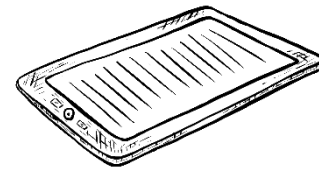
- **Absent loans** (for borrowing at home)
- **On-site loans** (for studying in the library, including items such as thesis papers, current issues of magazines, daily newspapers, etc.)

Library catalog



- **Available online**
(searching for documents, placing requests for documents from the reserves, reserving borrowed documents, access to e-books)
<https://arl.ujep.cz/arl-ujep/en/index/>
- **Library account**
(login, overview of loans, renewing loans, forgotten password)
<https://arl.ujep.cz/arl-ujep/en/login/>

E-books



Czech and foreign e-books from various academic fields

- Access via the library catalog or the Ebsco Discovery Service multi-search tool

<https://knihovna.ujep.cz/en/electronic-books>



Interlibrary loan service



Interlibrary Loan Service is used for temporarily obtaining documents between libraries in the Czech Republic. ILL can be used if a registered user requests a document that is not available in the UJEP University Library's collection and is also unavailable in any other library in Ústí nad Labem.

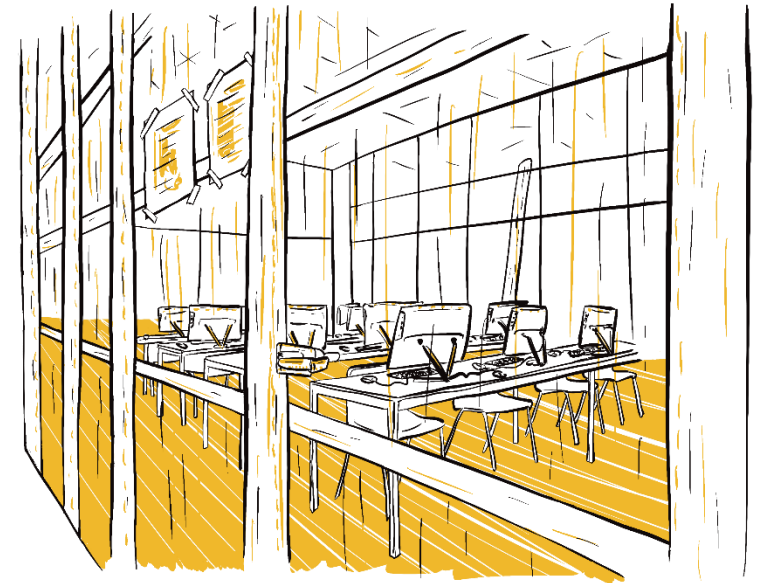
- Free of charge for registered library users
- Orders via the contact form
- Delivery format: book or article copy

Electronic information resources

The library provides access to bibliographic, abstract, and full-text databases. Available to UJEP students and academic staff.

<https://knihovna.ujep.cz/en/information-reseouces-in-ujep-2>

- Ebsco Discovery Service (The easiest way to access databases, searching across multiple databases.)
<https://knihovna.ujep.cz/en/ebsco-discovery-service-en>
- Remote access (access to databases within the UJEP network as well as from home)
<https://knihovna.ujep.cz/en/remote-access-to-electronic-information-resources-databases>
- Citation manager Citace PRO+ (a tool for creating, managing, and exporting bibliographic citations)



Research services



The library provides literature searches based on subject and formal criteria specified by the user. The search is conducted using the content of UJEP's electronic information resources, the UJEP library catalog, catalogs of other libraries in the Czech Republic, and possibly other freely available sources. The result is a list of bibliographic records of documents.

- For UJEP employees, complete searches (free of charge)
- For UJEP students, search services in the form of methodological guidance.

Informational literacy and consultation services



The library actively participates in improving users' information literacy through in-person and online training sessions. It provides consulting services to registered users (UJEP employees, UJEP students, and the public). It also offers library tours.

Information lessons and consulting services, both in-person and online:

- Electronic information resources
- Citation manager CITACE PRO+
- Literature search and retrieval services

Supplementary services

- Book purchase recommendation
- Reprografical services (printing, copying, scanning)
<https://knihovna.ujep.cz/en/how-to-print-copy-scan>
- Thermal and comb binding of documents
- Charging devices (cabinet for laptops, mobiles, and tablets; portable chargers)
- Lending of supplementary items (board games, umbrellas, blankets, flash drives, e-book readers, headphones)

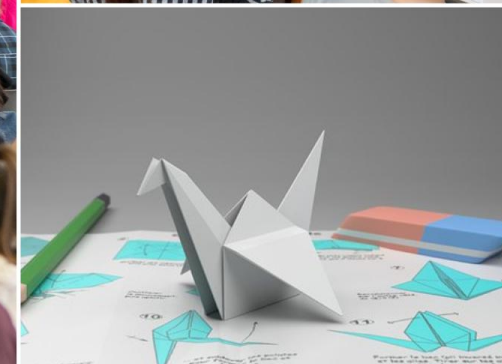


Library events

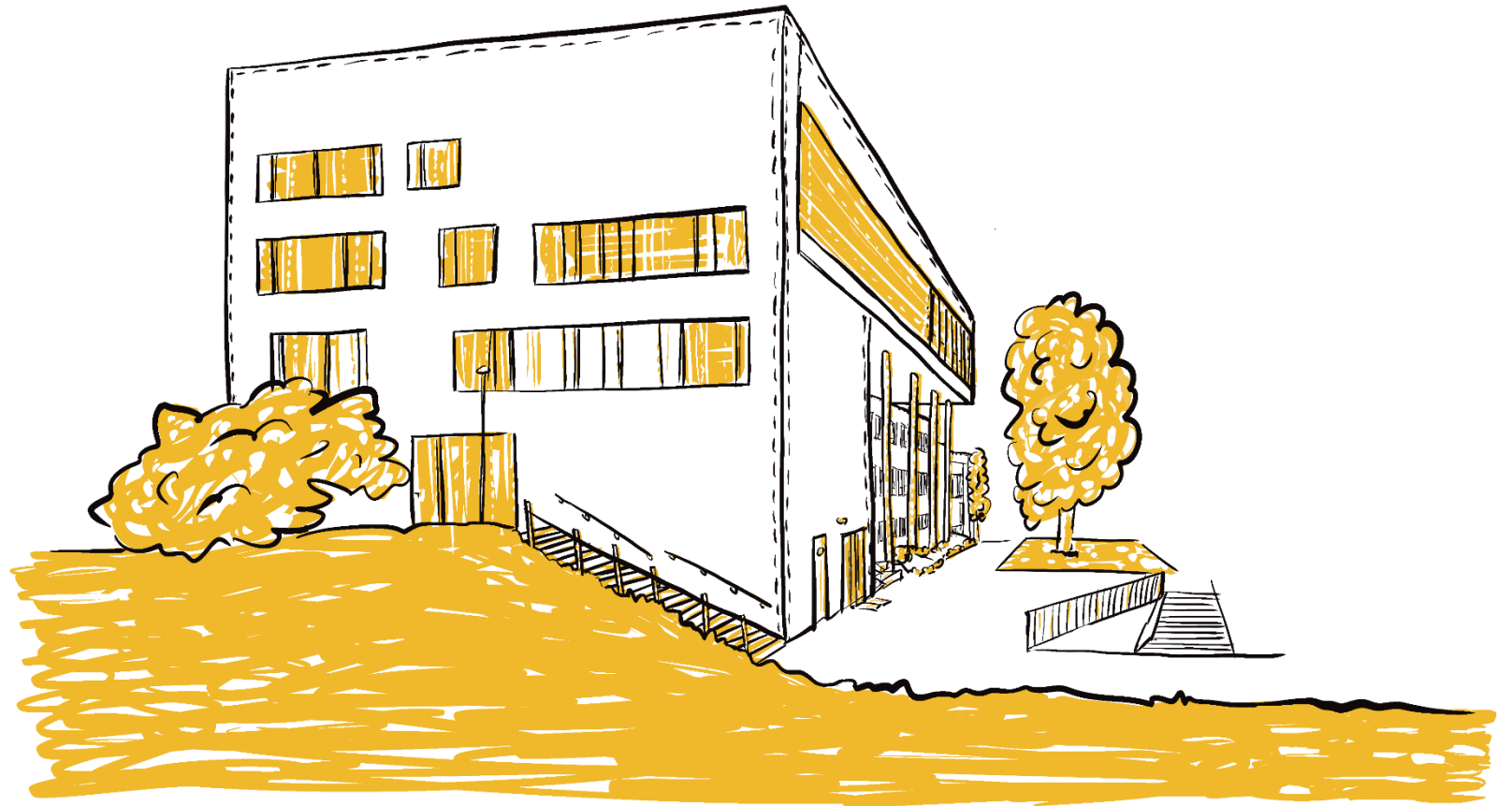
- Regular events (European days at UJEP, The night of literature, Library week, March – Month of readers)
- Workshops (origami, kaligraphy, Bookbinding, First aid...)
- Author readings (J. Formánek, R. Fridrich, R. Denemarková...)
- Notable foreign visits
- Travel lectures
- Participation in the Night of Scientists
- Excursions
- Exhibitions, calendars, and small displays
- Film screenings
- Surveys with rewards



Library events



The Research Library of the J. E. Purkyně University



We look forward to seeing you.
knihovna.ujep.cz